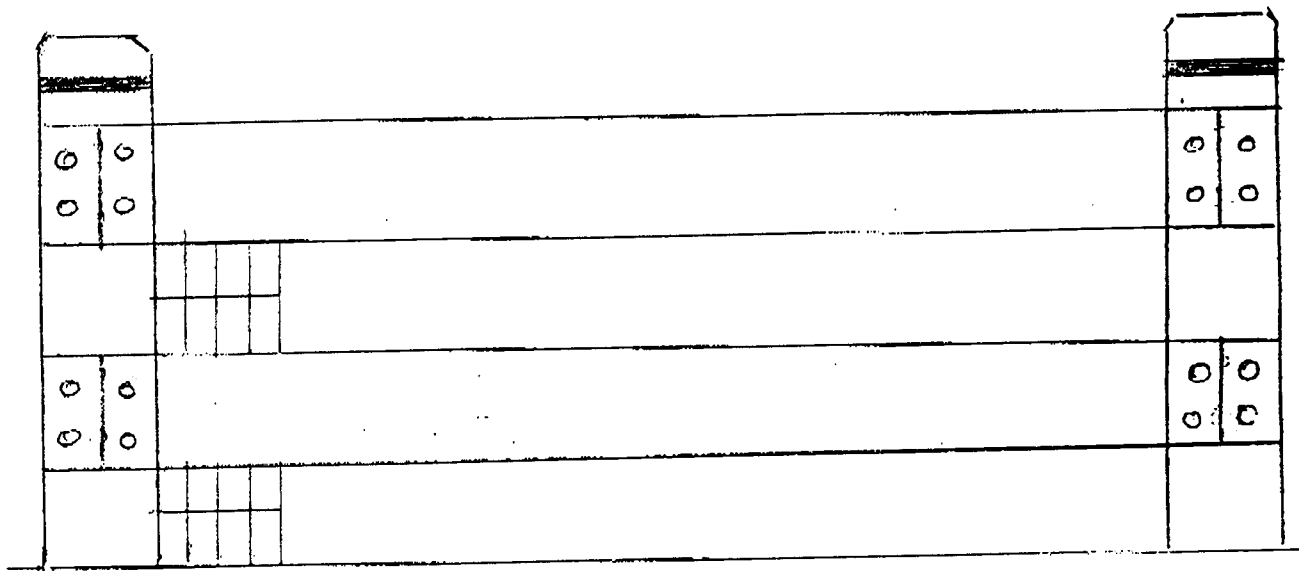


6"X6" POSTS, 8' APART, CHAMFERED/GROOVED TOP
 3 2"X6" RAILS
 2"X4" WELDED WIRE MESH (OPTIONAL)
 NATURAL OR STAINED CEDAR
 MAXIMUM HEIGHT- 48" TO TOP OF POSTS
 42" TO TOP OF TOP RAIL



6"X6" POSTS, 8' APART, CHAMFERED/GROOVED TOP
 2 2"X8" RAILS
 2"X4" WELDED WIRE MESH (OPTIONAL)
 NATURAL OR STAINED CEDAR
 MAXIMUM HEIGHT- 48" TO TOP OF POSTS
 42" TO TOP OF TOP RAIL

66